

# MEDORF HOMES

*..truly luxury*



MEDORF EXR  
SOLUTIONS





*You asked and we have responded*

Luxury has classes, Detached houses too have classes.

If you desire big space in your private fenced compound that give you freedom to park atleast 9 cars, where you can hold birthdays and other events, where your children can drive bicycles and play within your fenced big compound, Medorf Homes is exactly what you should go for.

Our Ultra modern Magnificent Fully Detached 4 Bedroom Mansion (Duplex) with BQ (i.e. 5 rooms) is highly spacious internally and externally. The building is structurally very strong. It is sitted on more than a full plot i.e. 650sqm plot. This is not the general houses you see, it is design for those who want high class, big space, understand freedom and quality luxury living but at very affordable price.

All the rooms have modern fancy balconies that give you good views. It comes with spacious 2 living rooms with balconies. All the rooms are also spacious and bigger than the standard room. Within your fenced compound are green areas and beautiful flowers.



This mansion has security house with beautiful light all around the fence. Highly Anaesthetic are the words to describe these mansions (duplexes). It is fitted with things to make you comfortable. The finishing is highly superb! Medorf Homes are located at Abijo, Lekki close to the expressway in a secured neighbourhood of Green Park Scheme Estate. It is surrounded by notable landmarks like Corona International School, Caleb British School, Shoprite (Novare Mall), Golf Course, Omu Resort and many more.



THERE'S A VOICE, THAT  
DOESN'T USE WORDS.  
IT'S YOUR

**MIND**



## Peace of MIND is a state of mind.

Your Mind searches for freedom from the unexpected. An assurance that can only come when your home is from a reputable developer who will deliver the very best homes with no compromises or excuses.



## Stunning views that free your **MIND**.

As the age old saying goes, climb mountains, not so that the world can see you, but so that you can see the world. It's true...the best views come after the hardest climb.

No home can truly appeal to the Mind without some amazing views.

## **MINDFUL** planning for every member of the family.

Having somewhere to go is a house, having someone there who you love is a home and a dream home is a place where every member of the family has amenities at their doorstep.

Amenities for the elders as well as amenities for the children will ensure that a home becomes a legacy and one which transcends time itself.






## **The Minds Wants Everything Good About Modern Houses**

- \*Big Space**
- \*Good Views**
- \*Privacy**
- \*Security**
- \*Good Road**

- \*Modern Aesthetics**
- \*Enough Parking space for guests**
- \*Amenities for Old age and children**
- \*Luxury**



Your Heart wants roots, but your Mind wants wings.  
Our Minds want what's new, modern, state of the art, the very best in technology to make our lives better. The Mind wants a world class taste of aesthetics, which only world class houses can deliver – like they do in world class houses.



## **Features:**

- Big compound**
- 650sqm plot size**
- Private fenced gated compound**
- Big Living room**
- Big Family Lounge (2nd Living room)**
- 4 spacious bedrooms**
- 1 room BQ**
- All rooms ensuite**
- Jacuzzi**
- Shower bath**
- Towel hanger**
- Fully fitted kitchen**
- Double door family fridge**
- Microwave oven**
- Cooker**
- Heat extractor**
- Contemporary fittings and chandeliers**
- Borehole treated water**
- Dedicated generator space**
- CCTV**
- Security house**
- Interlocked road**
- Stamped concrete compound flooring**



Sometimes, you've got to listen to your MIND, in order to save your HEART. When it comes to purchasing a dream home, this is no different. A rational MIND expects the very best - from the reputation of the developer to the quality of the home, from modern amenities to the safety and security of your loved ones. It's always important to listen to what the MIND wants.

They say, the toughest battle you will ever face is between what you feel, and what you know. It's the age old battle between your heart and your mind, which seldom want the same thing. And in this battle between the mind and the heart, it is often the soul that loses. Is there a dream home that exists, that could possibly unify all three?





**HOWEVER...**





**DREAM**

**EXPRESS WHAT YOUR  
SOUL IS TELLING YOU.**

Ever wondered, why we call it a MEDORF home? It's because this is where our SOUL feels at home, not our MIND. When we quiet our MIND, our SOUL will speak.

As important as it is to choose a home with your MIND, it's equally important to listen to your SOUL.





## LIVING ROOM

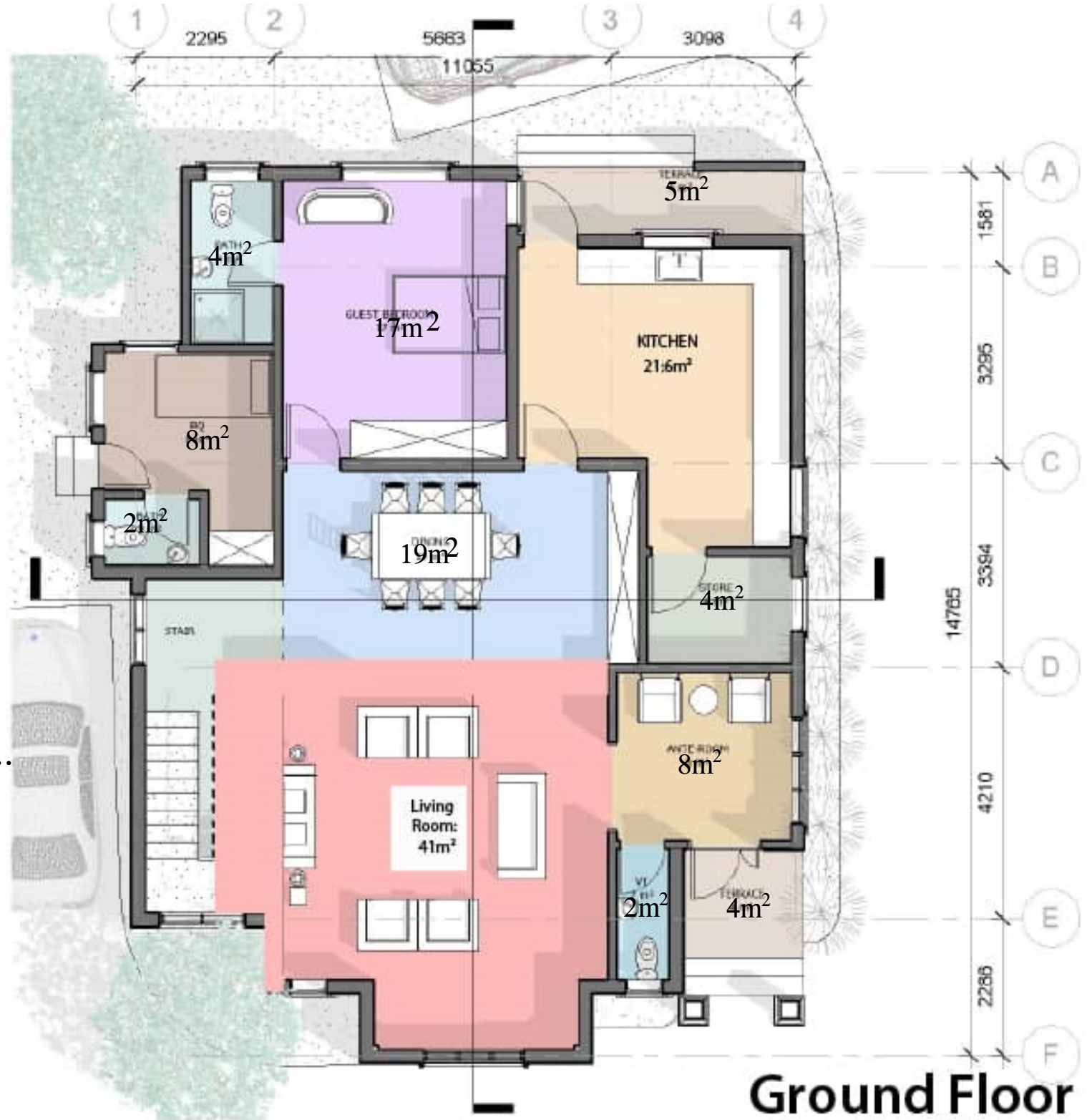
**The SOUL needs more space than the body.**

The Soul feels at home when you have your own space.

A place that's truly yours. The Soul demands spaciousness – to live in grandeur – like one would in a villa.



Floor Plans  
To the last detail,  
crafted with passion.  
Our vision brings you...





- 118
- 119
- 120
- 121
- 122
- 123
- 124
- 125
- 126

**First Floor**





**FAMILY LOUNGE  
(2ND LIVING ROOM)**

**A SOULFUL home is where generations come together. Your Soul speaks of many generations, living in harmony, under a single roof. A bond formed by sharing each other's lives and joys.**









## DINNING

Where you grew up, always feels like home. Your Heart knows your neighbourhood is a part of your family, it is where your home grew larger with new memories added every day.





# KITCHEN

No step has been missed to put your soul at ease.





## ROOM

The planning and design of Medorf Homes incorporates Vastu techniques to ensure an auspicious environment. Your beloved family can embrace each new day confident in the blessings and good fortune to come.



## ROOM & TOILET

Where wishes are fulfilled. Breathtaking vistas in sublime comfort, the grandeur of stunning living spaces, and tranquility at your convenience when you have a wide range of choices for leisure.



## **ROOM & TOILET**

HERE'S WHERE THE SOUL  
STOPS SEARCHING FOR MORE.



Refresh your mind with a morning stroll through pristine landscaped gardens.





*Truly Spacious, Truly Luxury*

# MEDORF HOMES

## PAYMENT PLAN

**PROMO PRICE: N70m Outright**

**6 Months Flexible Plan: N70.5m**

**12 Months Flexible Plan: N71m**

**18 Months Flexible Plan: N72m**

**INITIAL DEPOSIT: 10M**

**Other Charges**

**Survey Plan: N500,000**

**Deed of Assignment: N200,000**

**Pre-paid Meter Connection Fee: N150,000**

**BANK DETAILS:**

**Medorf EXR Solutions**

**GTBank**

**Account Number**

**0116046618**

## DELIVERY TIMELINE FOR MEDORF HOMES

### **5 MONTHS:**

for clients that pay outright or within 3 months.

### **14 MONTHS:**

for clients that pay within 12 months.

### **8 MONTHS:**

for clients that pay within 6 months.

### **20 MONTHS:**

for clients that pay within 18 months.

**WE ARE MEDORF EXR SOLUTIONS,**

bringing a bold new vision to Africa. We seek to redefine the skyline of Nigeria, not just in terms of architecture, but in the lives of those who inhabit our spaces every day.

**Office:** Beto Building, 1st Floor, Opposite Corona School  
Abijo GRA, Lekki-Epe Expressway, Lagos, Nigeria

**Email:** medorfsolutions@gmail.com **Phone:** (234) 806 771 5960

**[www.medorfsolutions.com](http://www.medorfsolutions.com)**